

World Economy and China

english taught master program

<http://www.bnu.edu.cn>



BNU Business School

9409, Jingshi Building, Beijing Normal University 19 Xijiekouwai

Street, Haidian District Beijing 100875 China

Tel: 0086-10-58804295

Email: xiejia@bnu.edu.cn

<http://www.bnulxsh.com>



北京师范大学
BEIJING NORMAL UNIVERSITY
BUSINESS SCHOOL

Introduction

Welcome to the Master program in World Economy and China at Beijing Normal University. We hope your study at BNU will be rewarding and your life in Beijing will be both enjoyable and exciting.

This brochure is intended as a full guide to the program, for potential students from all backgrounds who are interested in economics and China's economy. You are welcome to read it carefully and refer to it if you have any questions. The curriculum is described, as well as the instruction and assessment methods, in addition to a set of brief syllabi for all courses.

If you have any queries after reading this brochure, please feel free to contact us at xiejia@bnu.edu.cn or by coming to visit our office in Room 9409, 4th floor, Jingshi Building on the main campus.

SECTION ONE Getting Started

WELCOME





Aims and Objectives



The English Taught Master Program in World Economy and China is a two-year program with four semesters. In the first two semesters, there are approximately 4 months of lectures leading to an examination period toward the end of each semester; in the last two semesters, there is a combination of lectures and guided research dedicated to the graduation thesis.

We aim to provide students, who, preferably have but are not required to possess a background in economics and management from an undergraduate degree, with professional trainings in modern economics, including quantitative tools and techniques as well as theories and policy analysis, in addition to an opportunity to apply these in a piece of supervised research. Furthermore, we aim to offer a stimulating research-led environment where students work alongside leading researchers to develop the skills required to fulfill their aspirations to become professional economists, conduct further

research as PhD students, or become analysts on some other career path. Specially, unlike most other economic programs, we also aim to help our students to gain fundamental knowledge about China's society, economy and culture.

At the end of the program you should be able to read and understand research papers and articles in academic journals, build basic theoretical models, initiate your own empirical research and evaluate its findings. The emphasis is not only on students having the opportunity to do real economic research, but also on helping to foster the growth of future business leaders with an international vision, multicultural communication skills, and modern management ability.

Our objective is to provide students with the essential training to pursue a career in economic analysis, apply economic knowledge in other fields, or further research towards a PhD degree.



Induction and Registration

You should formally enroll as a full time student with the University's International Students Office (ISO) in the second week of every September (exact time subject to change according to the university calendar and pre-notice) in Room 9910, Jingshi Building. It is important that you go through this procedure in order to obtain a University Card. The campus card enables you to use facilities and services such as the library, cafeteria, and computing and internet services, including an email account, all of which you will need right from the very start of the academic year.

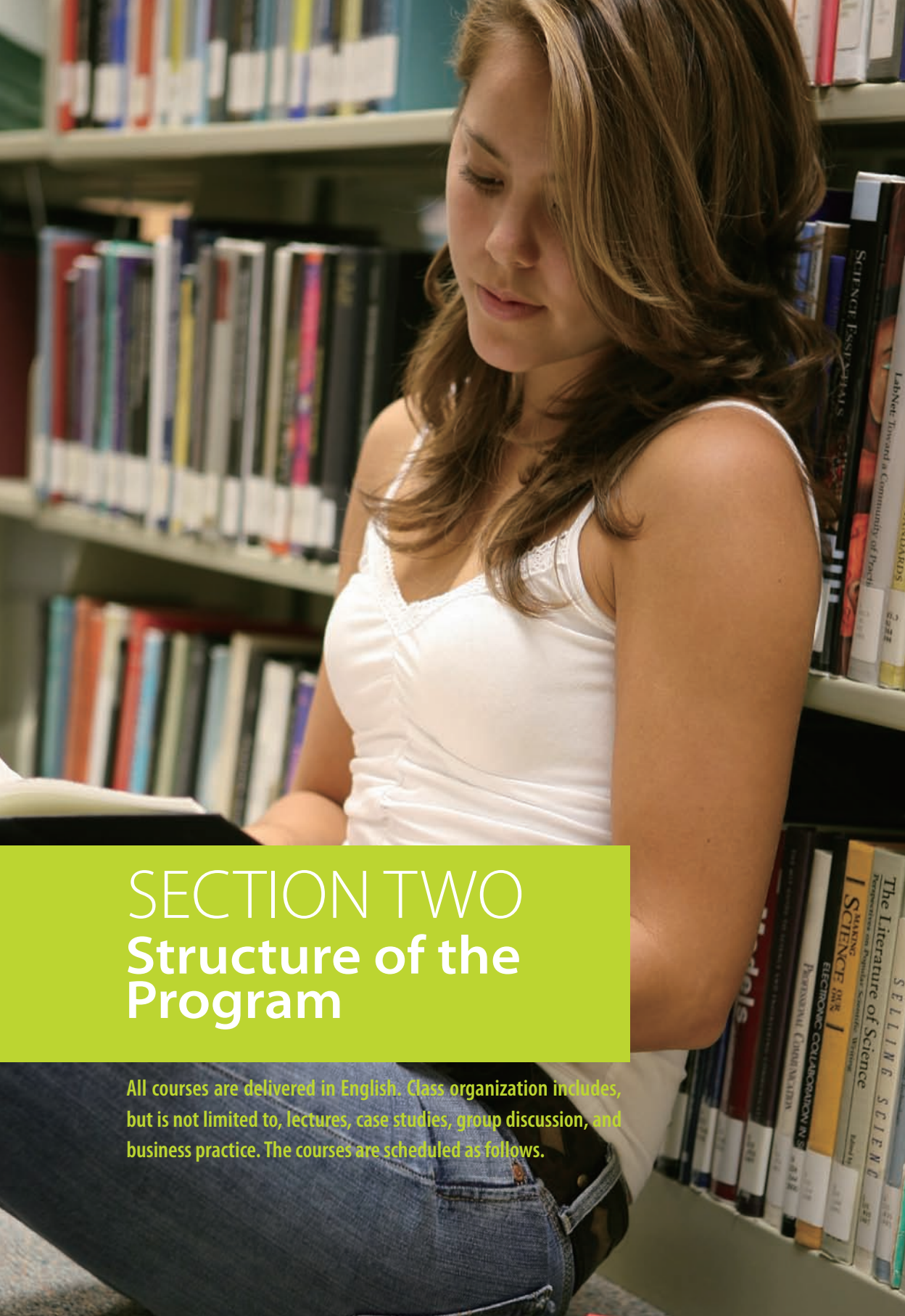
Additionally you should report to the Business School in Room 9409, Jingshi Building, directly after completing registration with the University to finish the enrolment process. There will be a welcoming ceremony organized by the University, usually in the second weekend of the semester, which will provide you with a good opportunity to meet with faculty, staff and other new students. Furthermore, the School will host a welcome lunch reception for all incoming students in the following week. Classes start from the same week of registration. Details of all important dates are given below.

Key Contacts

At the beginning of the program, a member of staff will be allocated to act as a class tutor to you who will be there to help you with any problems you may have. We encourage you to get to know the class tutor since she or he can more effectively help you if he/she is kept up to date of your progress. Therefore you will be asked to drop by regularly.

Any problems you have that are course specific should, in the first instance, be taken up with the lecturer concerned.

In the event of any difficulties which cannot be resolved by consulting the tutor, please refer to the coordinator of the program (Ms. Xie Jia, room 9409, Jingshi Building).



SECTION TWO Structure of the Program

All courses are delivered in English. Class organization includes, but is not limited to, lectures, case studies, group discussion, and business practice. The courses are scheduled as follows.

Please note

the precise nature of assessment and examination for each course will be specified by each instructor at the beginning of every semester.

** Chinese History and Culture provides opportunities for students to learn better about China's economy, society, philosophy, history, culture etc. This course is organized jointly across different schools. It is worth a maximum of two credits, excess credits will be discounted.*

** Chinese courses are delivered by Chinese Language Department at Beijing Normal University. The students are encouraged to learn Chinese language in-session, and the School will pay for 2-credit tuition fee for each student upon their qualification from the language course.*

	Autumn (Semester 1)	Spring (Semester 2)	Autumn (Semester 3)	Spring (Semester 4)
Required Courses	Macroeconomics (3 credits)	International Finance and China (3 credits)	Global Economic Issues and Policies (2 credits)	Graduation Thesis (6 credits)
	Microeconomics (3 credits)			
	International Business and China(3 credits)			
	Chinese History and Culture (2 credits)*			
Optional Courses	Cross-cultural Exchange and Management (2 credits)	International Economics (2 credits)	Development Economics (2 credits)	
	Chinese* (2 credits)	Econometrics (2 credits)	Research Methods on Empirical Economics (2 credits)	
		International Marketing (2 credits)		
		Topics on China's Economic Development (2 credits)		

Requirements

Students should complete 32 credits of coursework and thesis, which include 16 credits of required courses, 10 credits of optional courses and 6 credits from the thesis (1 credit is equal to 18 class hours). Students are required to acquire basic economic theories and analysis tools, understand the mechanism of economic globalization and marketization, and its impact on the development of China's economy. Proficiency in cross-cultural communication and a basic level of Chinese reading, speaking and writing skills are also required.



SECTION THREE

Thesis Guidelines for the Program

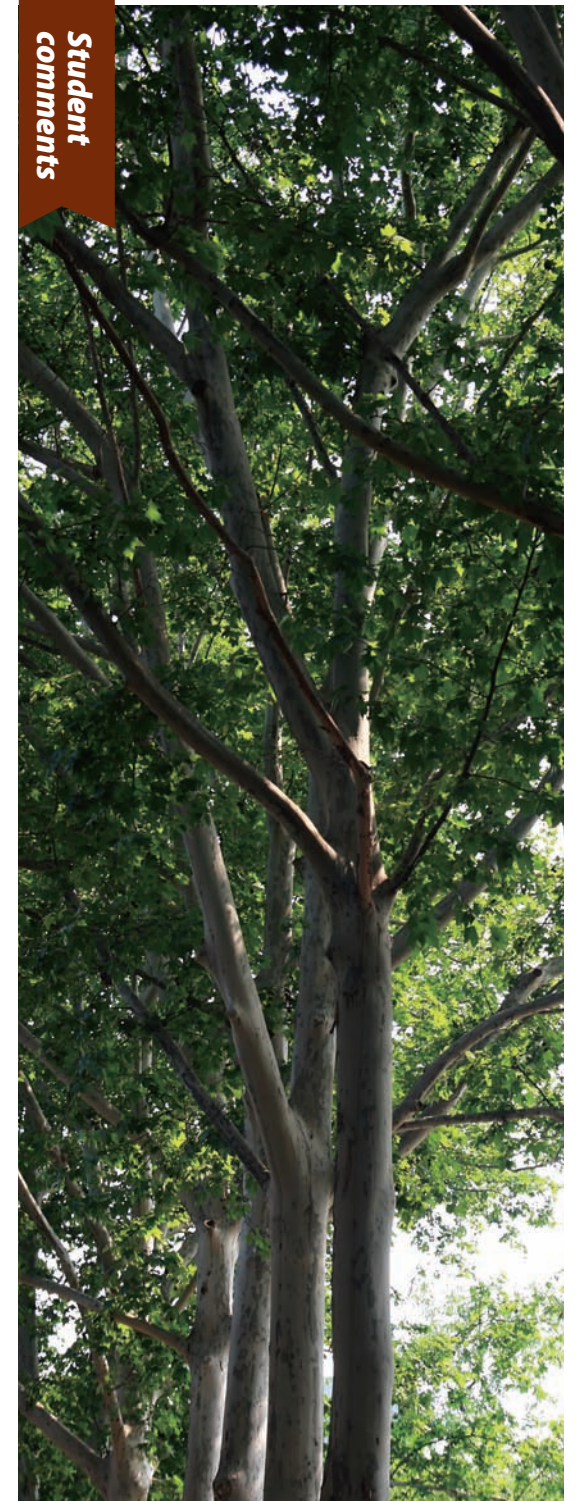
Student comments

Attending "The World Economy and China" Master's program at Beijing Normal University has been one of the most rewarding, enjoyable, and interesting experiences in my life. The quality of teaching is excellent with a wide array of courses available in the broad category of economics. Outside of university, Student life in Beijing is fantastic. There is always something new and exciting to discover and try. The time spent at Beijing Normal University has been so enjoyable that I am planning to live and work in China after I graduate.

—Rory Green, UK

The main aim of the thesis is to encourage independent study and to provide a foundation for future original research. In terms of learning, the thesis should provide students with a number of research skills, including the ability to:

- 1 Define a feasible project allowing for time and resource constraints;
- 2 Develop an adequate methodology;
- 3 Make optimal use of library resources;
- 4 Access data bases, understand their uses and limitations and extract relevant data;
- 5 Work without the need for continuous supervision.





Thesis Topics and Supervisors



The first task is to determine thesis topic and two possible supervisors. Topics may be suggested by course lecturers. Alternatively you may already know the topic you wish to pursue. It is critical that you choose a topic that you are really interested in and not something that you think sounds good.

Information on potential supervisors will be made available in a spreadsheet at the end of the second semester; the document will include a list of all supervisors, and their main areas of interest. Alternatively, you can browse the staff personal web pages for information, or approach members of staff directly with your research ideas.

Once you have decided on a topic, and some possible supervisors, you will be required to fill out a form indicating your two most preferred supervisors, your thesis title,

and a short (max. 200 words) description of your planned research. This form must be submitted by the end of week 19 of Semester 2.

By the second week of Semester 3, time subject to change, all students will be allocated supervisors. This allocation is based on the information given in the form, and we will do our best to match students with one of their preferred supervisors.

Changes in title must be approved by the supervisor. A request for a change in supervisor must be made directly to the Program Office. Changes will only be made if both former and new supervisor agree.



The Role of the Supervisor

The role of the supervisor is to give you advice on the feasibility of your chosen topic and ways of refining it; provide some references to the general methodology to be used; offer general guidance regarding the literature review and analysis of the chosen topic.

Supervisor Expectations: first, your supervisor is not expected to spend more than two hours supervising your thesis, this includes reading any drafts, email correspondence, as well as face-to-face meetings. Second, your supervisor is not expected to be available after the end of the summer term, or expected to read and comment on a final draft of your thesis. Supervisors are allowed to provide experienced PhD students during the supervision period to advise students on data and computer software issues.



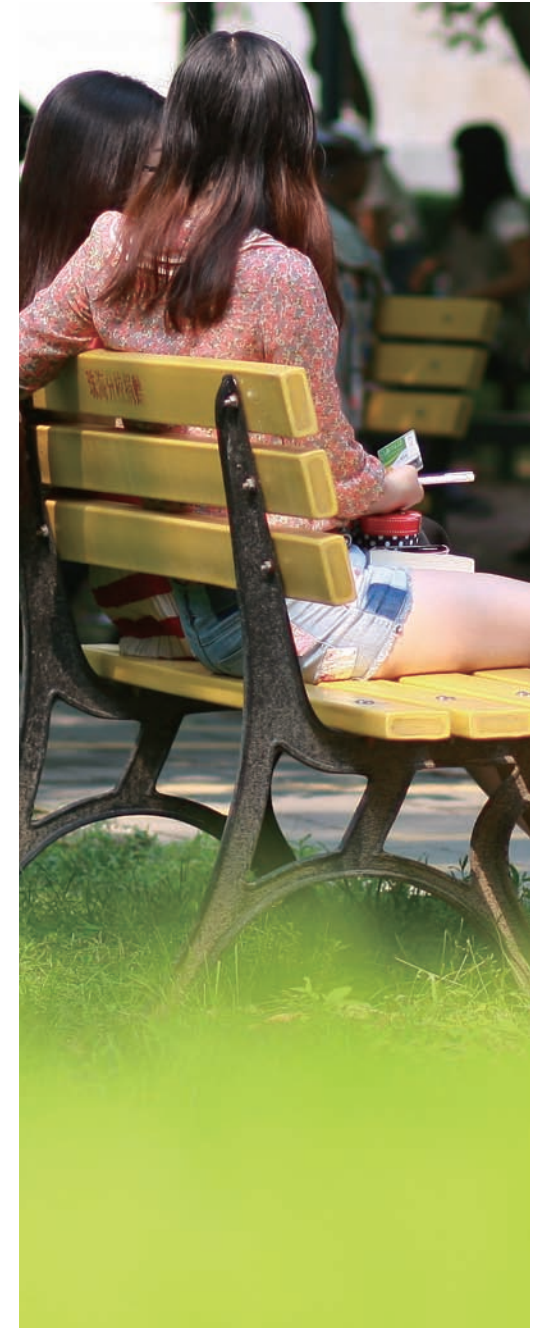


The Thesis Proposal

There are two parts in the thesis proposal stage: a written proposal and a proposal defense. First, you will be required to discuss and present your idea to the supervisor, and the supervisor will help to focus your ideas. You will then have to write a detailed thesis proposal to include literature review, research plan with methodology, and the research questions. This should be minimum length of 2000 words excluding all appendices, footnotes, tables and the bibliography.

- *You will have a total of 15-20 minutes, 10-15 minutes for the presentation followed by 5 minutes questions and comments;*
- *The presentation should either use PowerPoint or pdf;*
- *You must identify the title of your proposed research, the research objective, the data and any computing/statistical tools required;*
- *The research objective should be briefly expanded into a justification of why you want to study this question – why is it important followed by a short description of what you intend to do;*
- *One slide is adequate for covering related literature.*

Then, based on the written proposal and presentation, you shall get feedback from the defense board, which allows you to polish your idea for further research.





Student comments

"This program is an enriching experience: The classes are very interesting and well structured as teachers always make time for discussions. Moreover, the cross-cultural environment allows me to learn everyday from my international classmates. In my opinion there is no better place to learn about China and its thriving economy from an international point of view."

—Deborah Baruc, Israel



Thesis Format and Submission

The thesis itself should be a maximum length of 15000 words, excluding appendices, footnotes, tables and the bibliography. There is no minimum word length and concise expositions are encouraged.

The first page of the dissertation itself should include the title, your name, date and any preface and acknowledgements. We have no particular preference on how you format your dissertation but detailed guidance on content and presentation will be given in the Research Methods Course.

The deadline for submitting the final thesis will be in late April every graduation year. Any student who cannot make their deadline due to medical, or other extenuating circumstances, will be required to complete an extension form from the University ISO, the director of the Program has the discretion to approve or decline an extension application. If an application is approved, the student will be permitted

to submit their thesis at the next biannual deadline. Suitable medical or other evidence needs to be supplied by the student within two weeks of submitting the extension request. Both paper and electronic copies of the thesis plus a submission form should be given into the Program Office. Earlier submission is possible, but must include the submission form. Note that extensions will not be granted on the basis of a student being in full- or part-time employment or on the basis of undertaking a summer internship.

Typing

The type of the thesis should be double-spaced, font size 12, with wide margins, on one side of the page only; material which cannot readily be typed may be written by hand. We recommend that you use Microsoft Word which can easily insert equations. Pages must be numbered.

Student comments

Being at BNU has been a great experience for me. Pursuing this program has offered me a broad range of education about world business economy with excellent professors and lectures. Moreover, it gave me insightful and interesting information about the Chinese business economy and the changes occurring in the world.

—Elie Moussallem, Lebanon



Assessment

To achieve at least a pass, a dissertation must demonstrate a high level of competence in both analysis and expression. This can be achieved in several ways, for instance by:

- *Providing a critical survey of some area of the subject. This should be written in such a way as to take the non-specialist reader from the beginnings of the topic up to the frontiers. It should integrate and synthesis existing ideas, demonstrate the relationships between them and assess their significance. It is not enough to simply catalogue previous work. However lengthy the bibliography is, a thesis which shows no deep grasp of the motivation, content and structure of the literature will fail.*
- *Applying techniques developed by others to a dataset not previously used for that purpose, with a clear motivation for doing so.*
- *Examining the robustness of an existing theoretical model to changes in its underlying assumptions, with a clear motivation for doing so.*

At least two examiners will assess your thesis employing standard criteria. No feedback on the result of your thesis is possible until the thesis defense. A pass list will then be published. An official transcript of marks will be provided by the Graduate School after graduation.

Thesis Defense

There will be at least 3 professors in the defense team, two from our School, and one from our brother school either in BNU or outside BNU. The defense will be arranged as a presentation format, similar to the proposal defense. In the presentation, each student has to prepare a 10 min. report on the thesis, with 5 min. for questions and evaluation.

Please be noted that the University will ask for the cooperation of all students in the provision of approximately 1000rmb (details of the amount will be circulated in an official notice) in cash, to be submitted to the Program Office one week before the thesis defense. The money will be used as a compensation for the thesis defense and review team. It is, of course, a prepaid money already allocated, and you will then get refunded from the University Finance Office in two weeks.

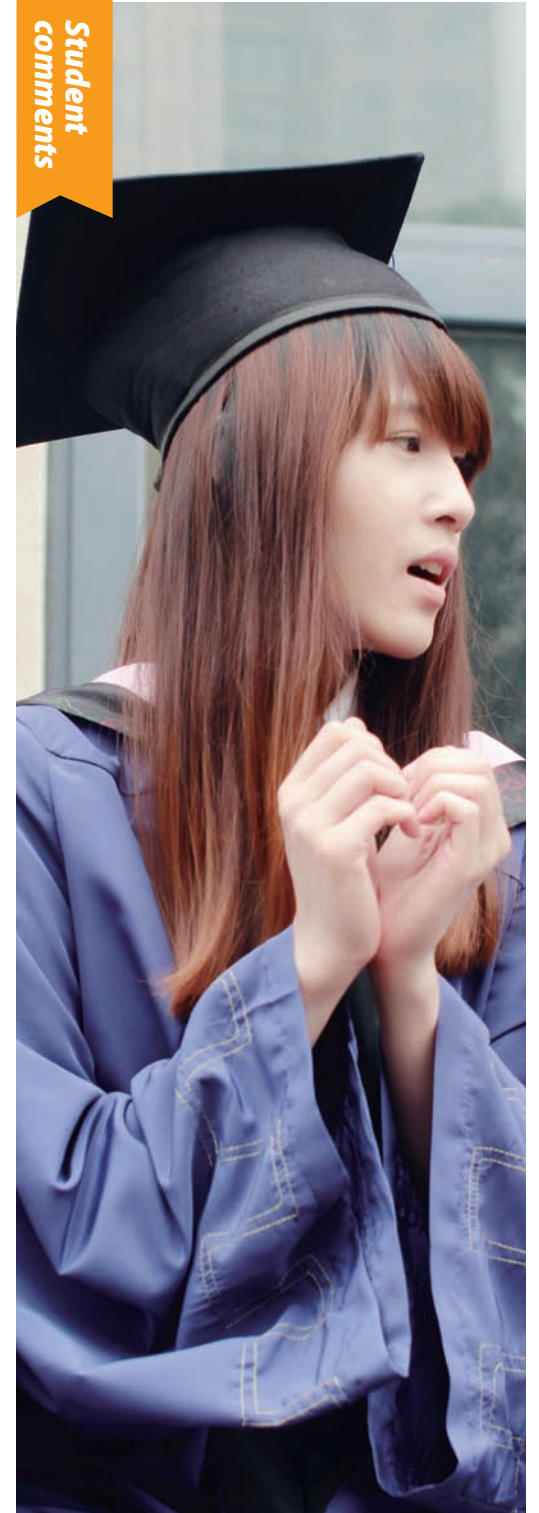
"China is shaping the world by transforming itself, and the World Economy and China program at BNU has been the best choice to get involved by knowledge and skills to understand these changes and to propose new ideas"

—Iran Monroy Cano, Mexico

SECTION FOUR Graduation

Students who have satisfactorily completed the required credits and thesis will, after the BNU Academic Degree Evaluation Committee met, be conferred a Master's Degree in Economics from Beijing Normal University.

The Graduation Ceremony is usually held in early July, the exact date depends on the University calendar.



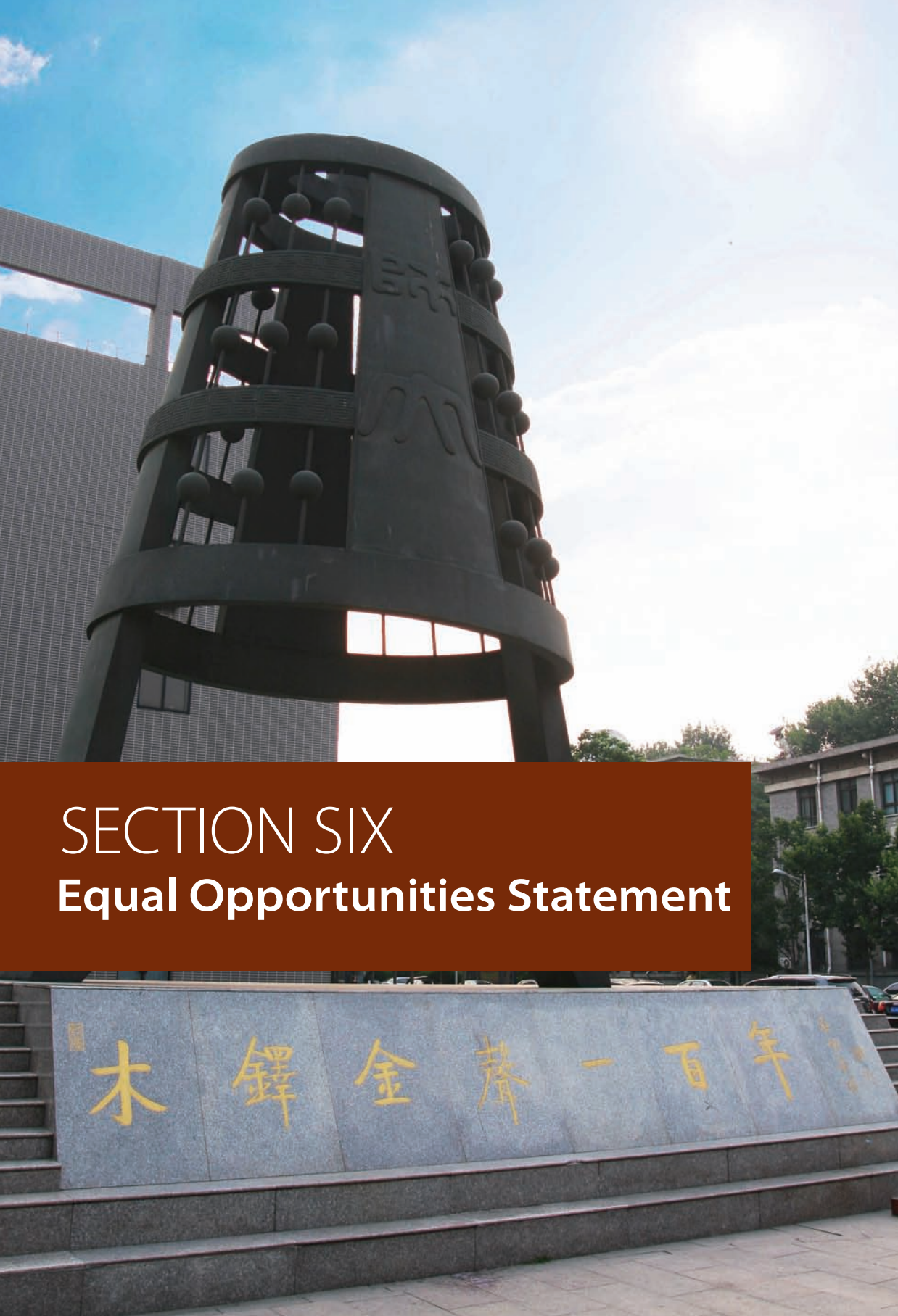


SECTION FIVE Useful Notes

*There are two main costs in the study-
Tuition fees and living expenses*

Academic fees: 40,000 RMB per academic year, covering tuition, examinations and registration and some student amenities. The fee may change in line with inflation. Tuition is payable at the beginning of each academic year, or later according to the notice from the Finance Office. To extend graduation students are required to pay 20,000 RMB per semester.

Living costs: Around 4000 RMB per month as a rough guide, this will include accommodation (if you live off campus you will also have to budget for local travel and utilities i.e. heating, water, electricity); food and toiletries; clothes; telephone charges; laundry costs; books and materials for your course; leisure, sport and entertainment; sundries such as haircuts, prescriptions etc. For campus accommodation, please refer to the website of BNU International Office <http://www.bnulxsh.com/english/index.htm>.



SECTION SIX

Equal Opportunities Statement



Beijing Normal University recognizing the value of sustaining and advancing a safe and welcoming learning environment, strives to treat both employees and students with respect and dignity, treat them fairly with regards to all assessments, choices and procedures, and to give them encouragement to reach their full potential. Therefore the University strives to

treat all its members on the basis of merit and ability alone and aims to eliminate unjustifiable discrimination on the grounds of gender, race, nationality, ethnicity or national origin, political beliefs, religious beliefs or practices, disability, marital status, family circumstances, sexual orientation, spent criminal convictions, age or any other inappropriate ground.